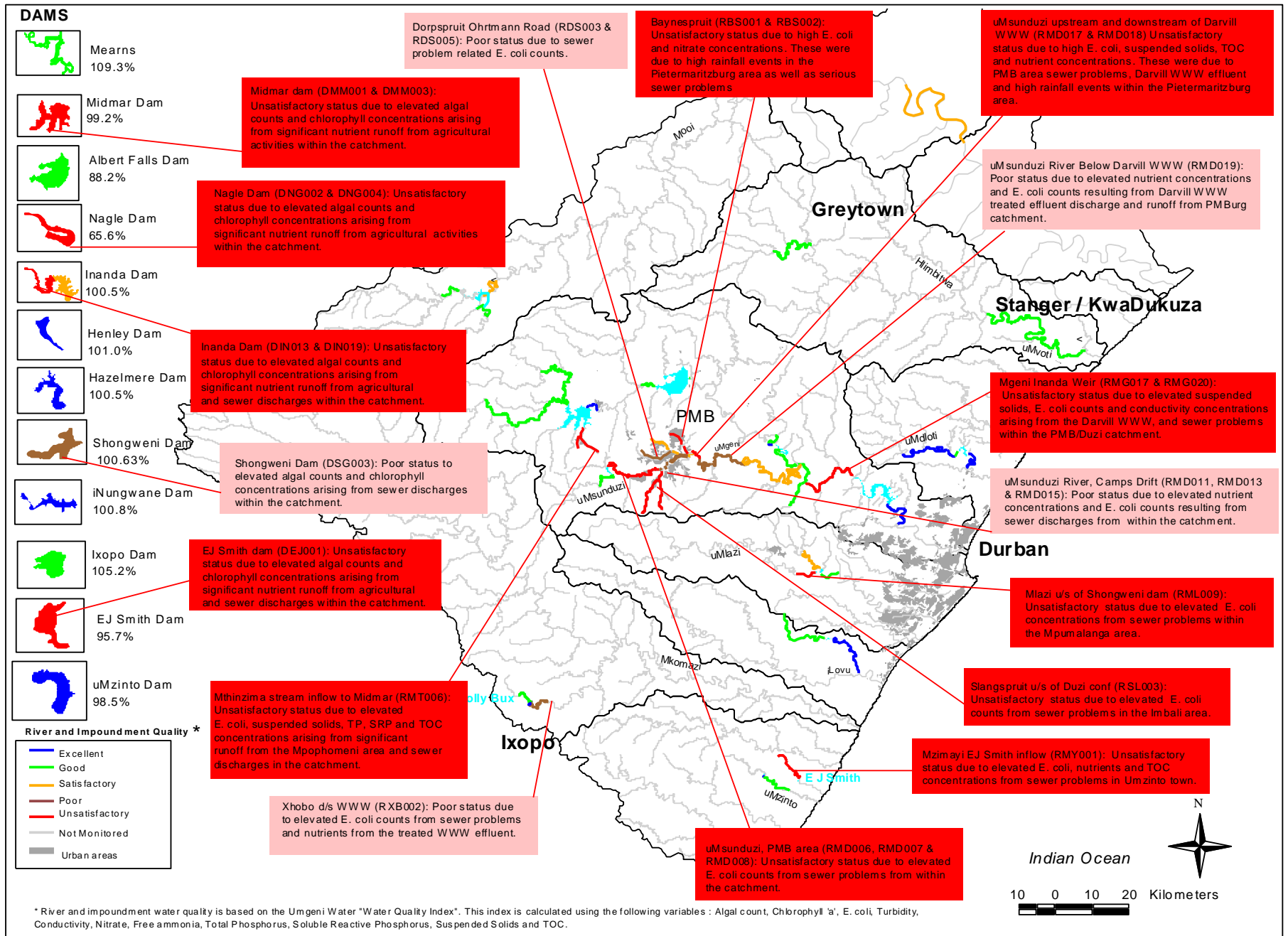


uMngeni River Catchment

(overview of water quality and environmental issues)

Map 1: Water Quality Status of Rivers and Dams for February 2008



Greytown

Himbitwa

St

PMR

uMloti

uMauneluzi

Indian Ocean

uMlozi

Durk

Water and soil quality



Water and soil quality were quality assessed on the September 2008 water quality index. The water quality index is a composite index of various water quality parameters (temperature, dissolved oxygen, pH, total suspended solids, nitrate, nitrite, nitrate, total phosphorus, soluble reactive phosphorus, suspended solids) to assess the overall quality of water. The index is based on the following scale: 100 (Excellent), 90 (Very Good), 80 (Good), 70 (Fair), 60 (Marginal), 50 (Poor), 40 (Very Poor), 30 (Extremely Poor), 20 (Unsuitable for any use), 10 (Unsuitable for any use), 0 (Unsuitable for any use).













uMngeni River Catchment

(overview of water quality and
environmental issues)













Mpopomeni 2001



Same sewer,
October 2008



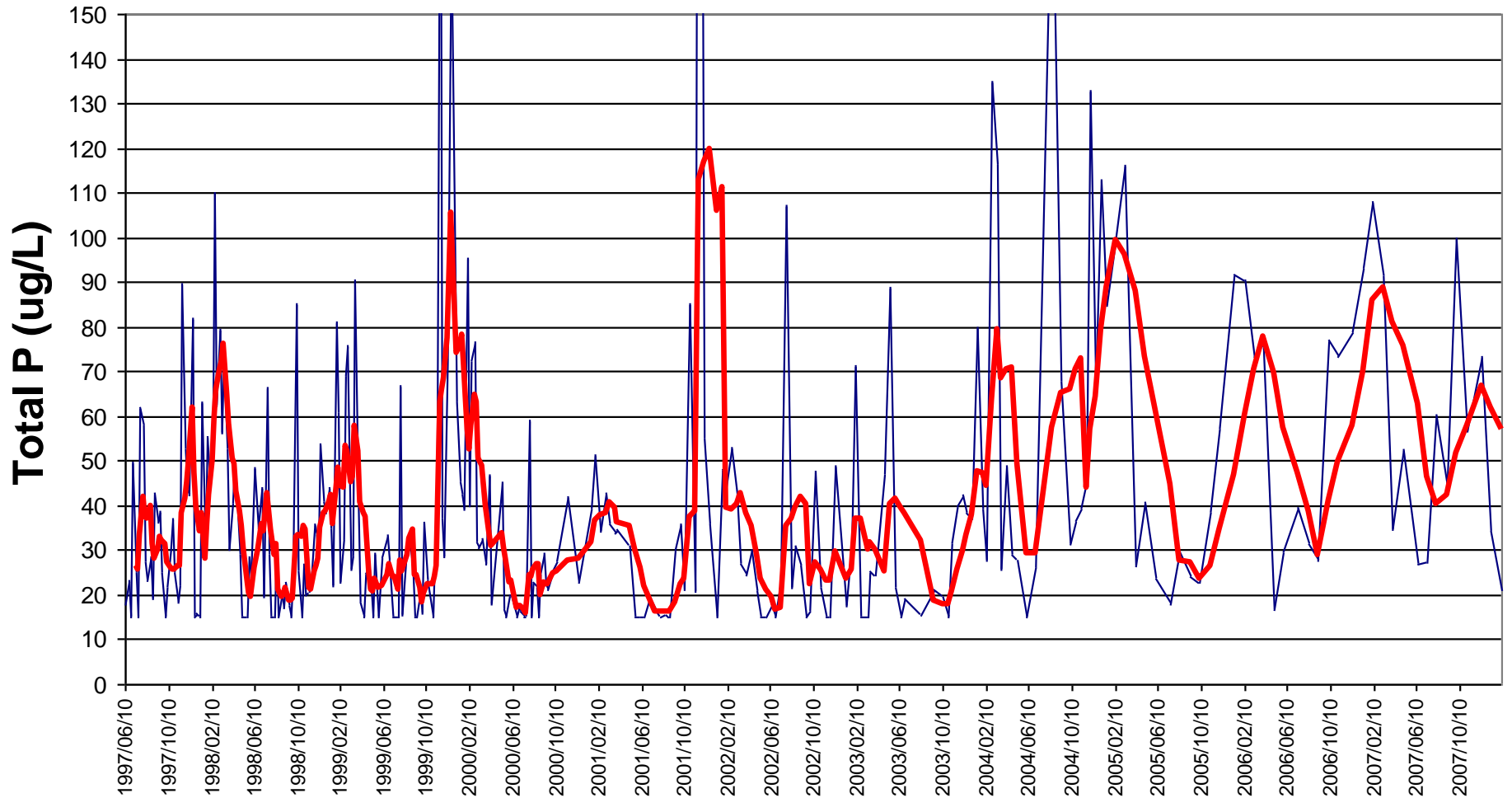


uMngeni River Catchment

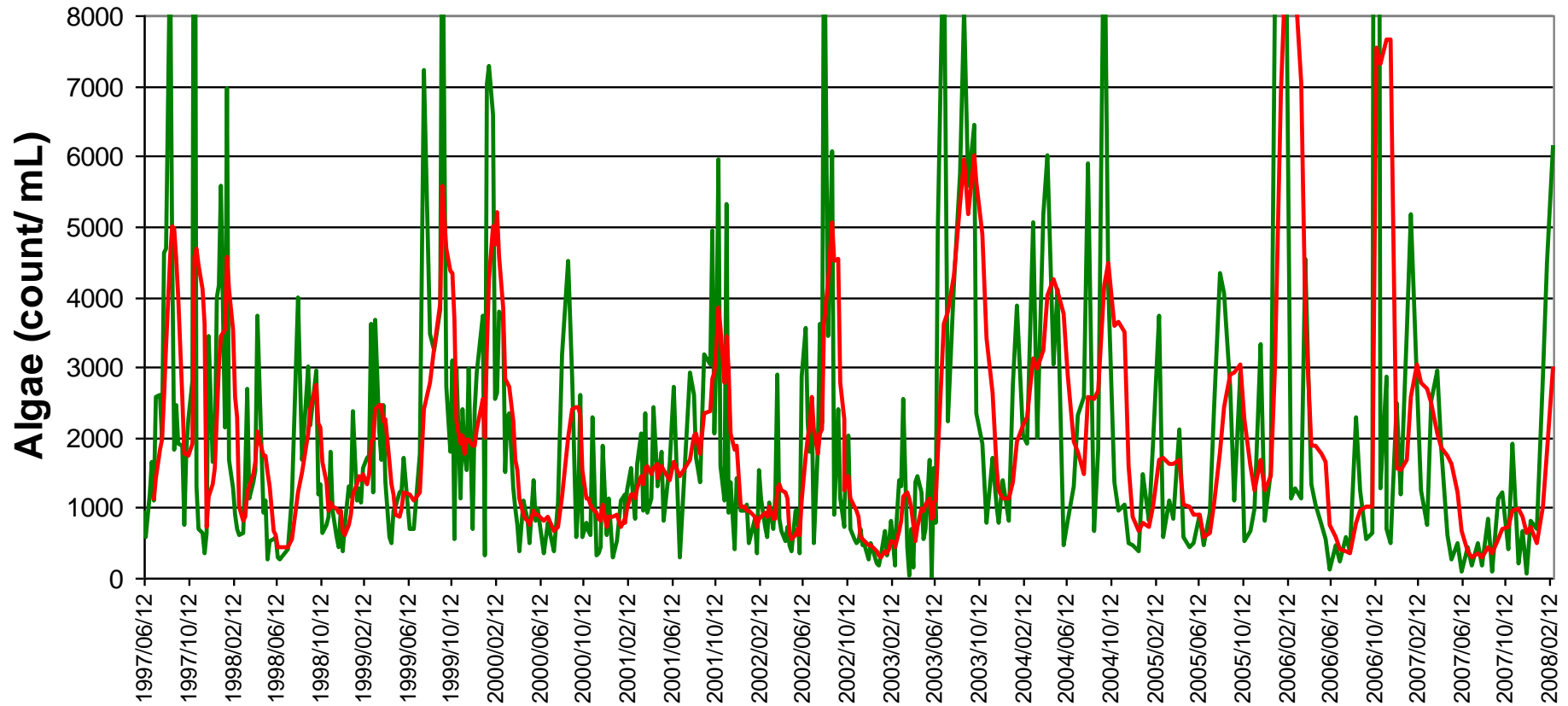
(overview of water quality and
environmental issues)



Mgeni Midmar Inflow - total P



Midmar Integrated Sample Algae













uMngeni River Catchment

(overview of water quality and
environmental issues)











10 9 2004









uMngeni River Catchment

(overview of water quality and
environmental issues)















The Msunduzi River Catchment - not quite so nice!

